



# Driving GBP 1 billion growth for a leading UK based bank

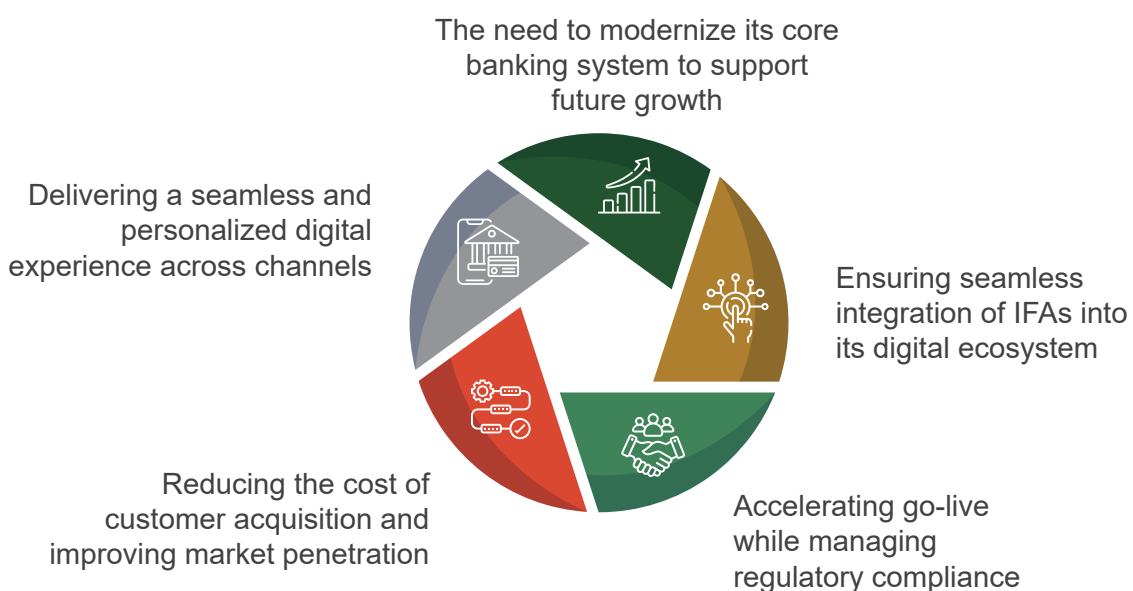
UK | eMACH.ai Core Banking,  
eMACH.ai DEP

## Client overview

A leading UK-based private bank has been working with private clients and professional advisers for over. While it is part of a global banking group, it operates with its own banking license and is protected under the Financial Services Compensation Scheme. The bank primarily serves its clients through a strong network of Independent Financial Advisers (IFAs) and caters to nearly 300,000 customers - many of whom are high-net-worth individuals.

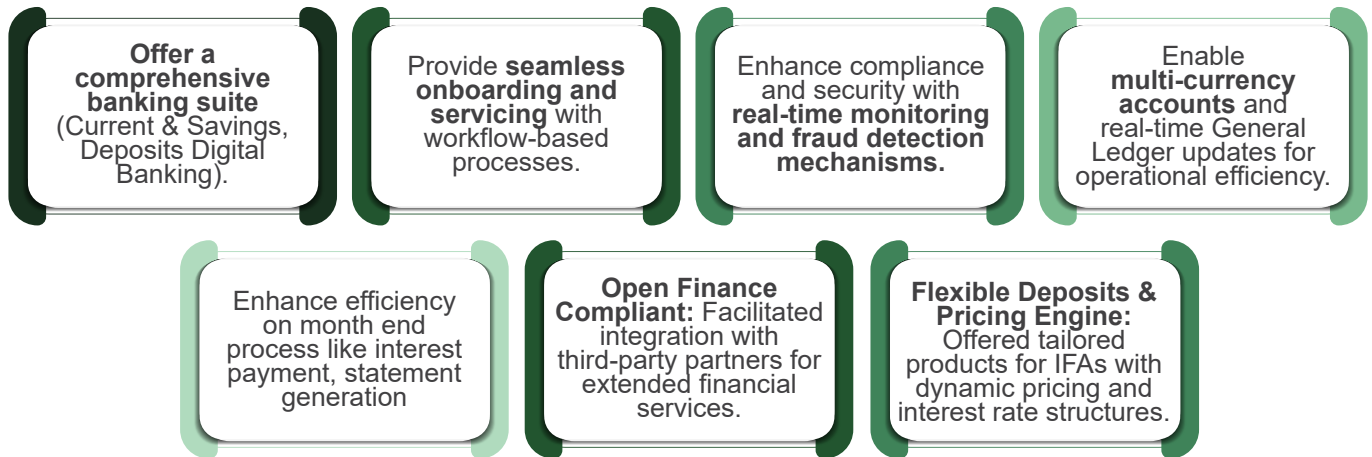
## Challenges

The bank, which operates with a unique business model focused on deposit mobilization through Independent Financial Advisers (IFAs), faced several challenges:



## Solution

### eMACH.ai Core Banking modernizes infrastructure

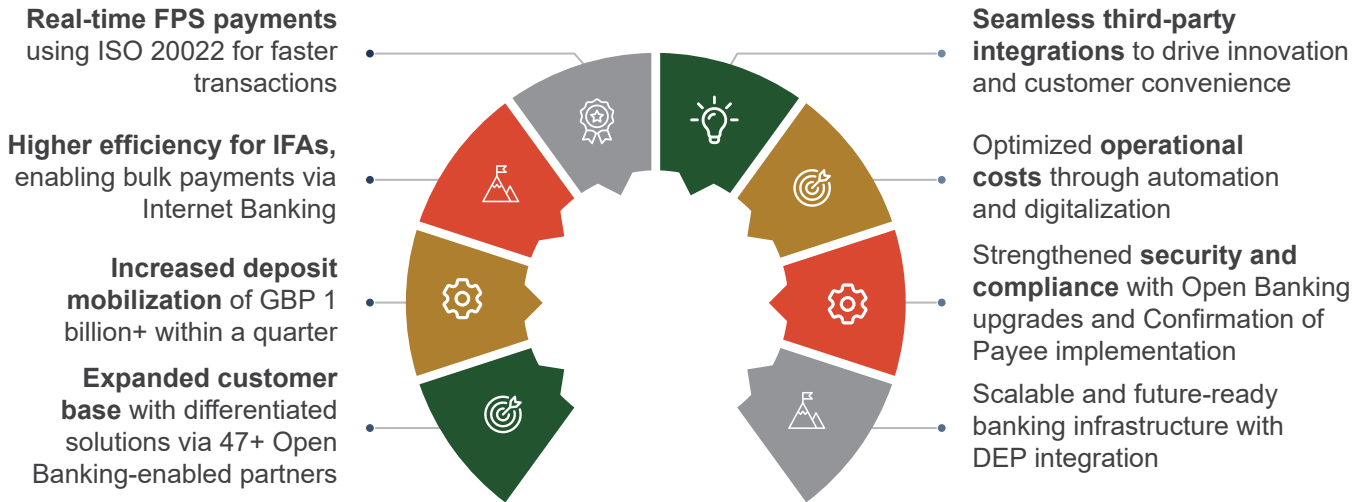


### eMACH.ai DEP drives customer engagement



## Transformation highlights

Through the implementation of eMACH.ai Core Banking and eMACH.ai DEP, one of the UK's oldest private banks has successfully driven an Open Finance-enabled digital transformation.



## Metrics at a glance



**91,865** Open accounts and  
**2,130** fixed deposits  
managed seamlessly.



**72,317** Registered internet  
banking users with **33,067** active  
users in the last six months.



**1,727** Average daily  
payments processed



**421,969** Connected parties  
ensuring comprehensive  
banking coverage.



**5-year Contract renewal**  
ensuring long-term innovation  
and service excellence.



[www.igcb.com](http://www.igcb.com)



[marketing.gcb@intellectdesign.com](mailto:marketing.gcb@intellectdesign.com)

igcb-intellect

